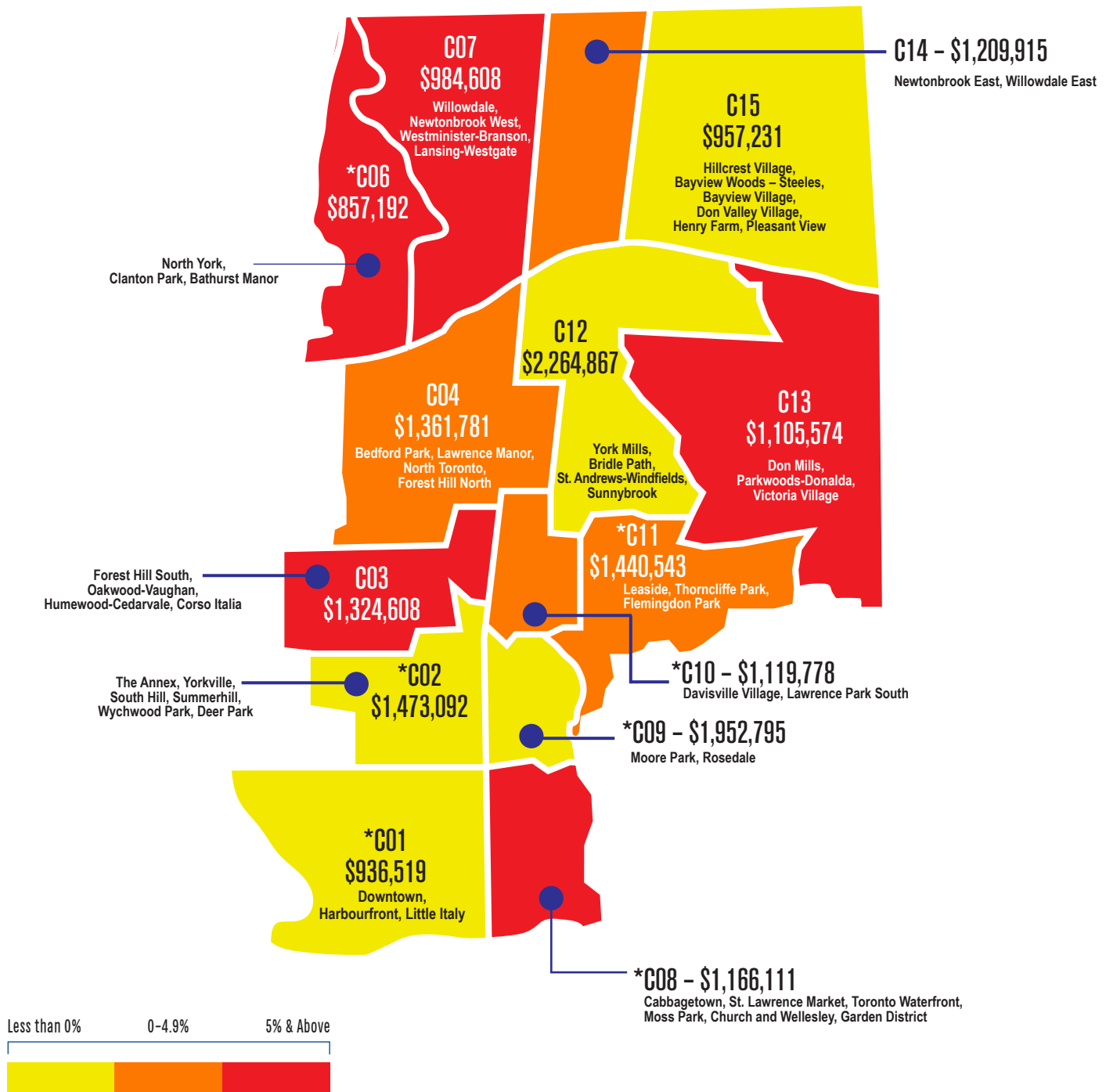


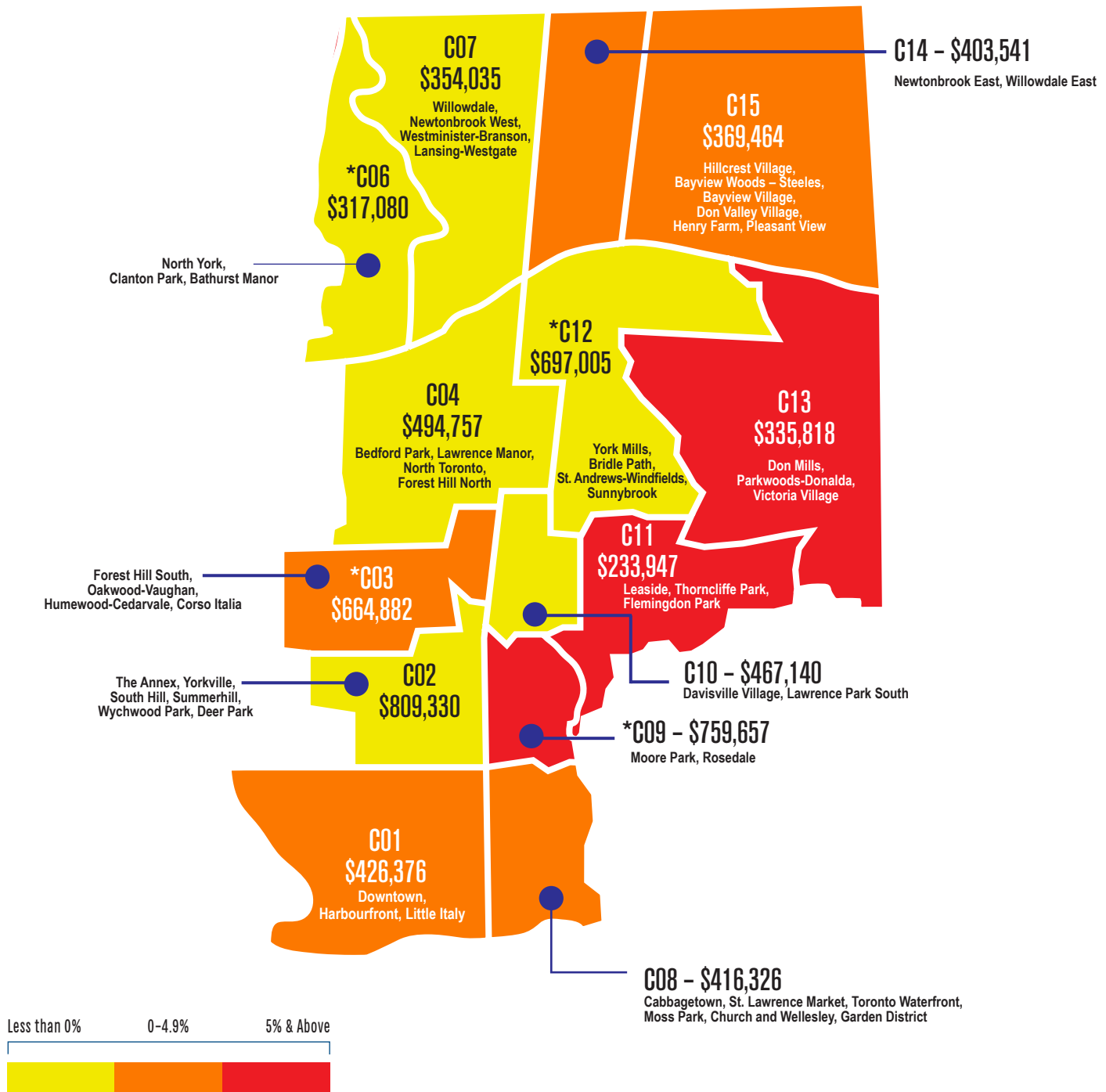
City of Toronto – CENTRAL – Detached Homes

Average price by percentage increase/decrease: January to June 2013



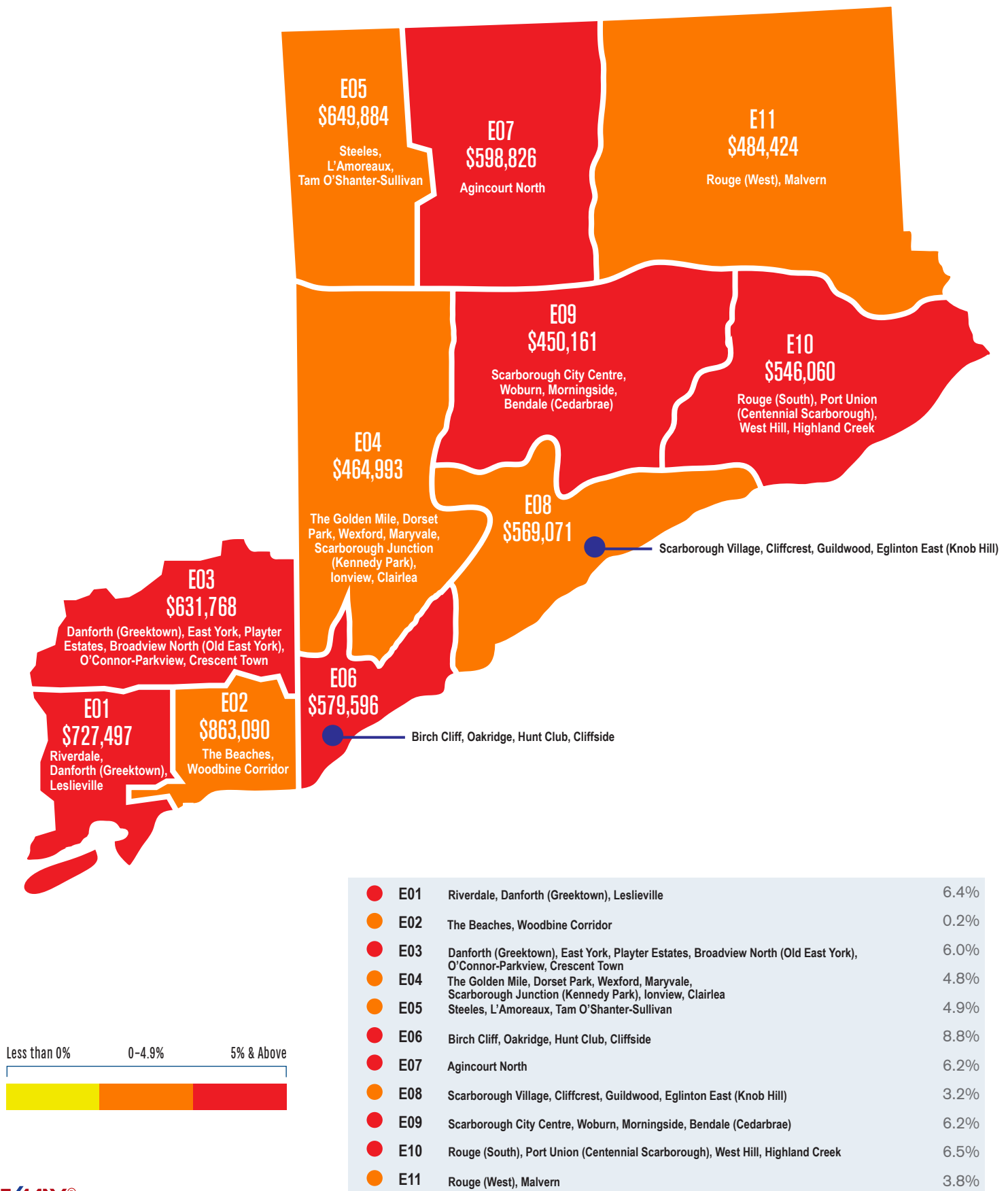
City of Toronto – CENTRAL – Condominium Apartments & Towns

Average price by percentage increase/decrease: January to June 2013



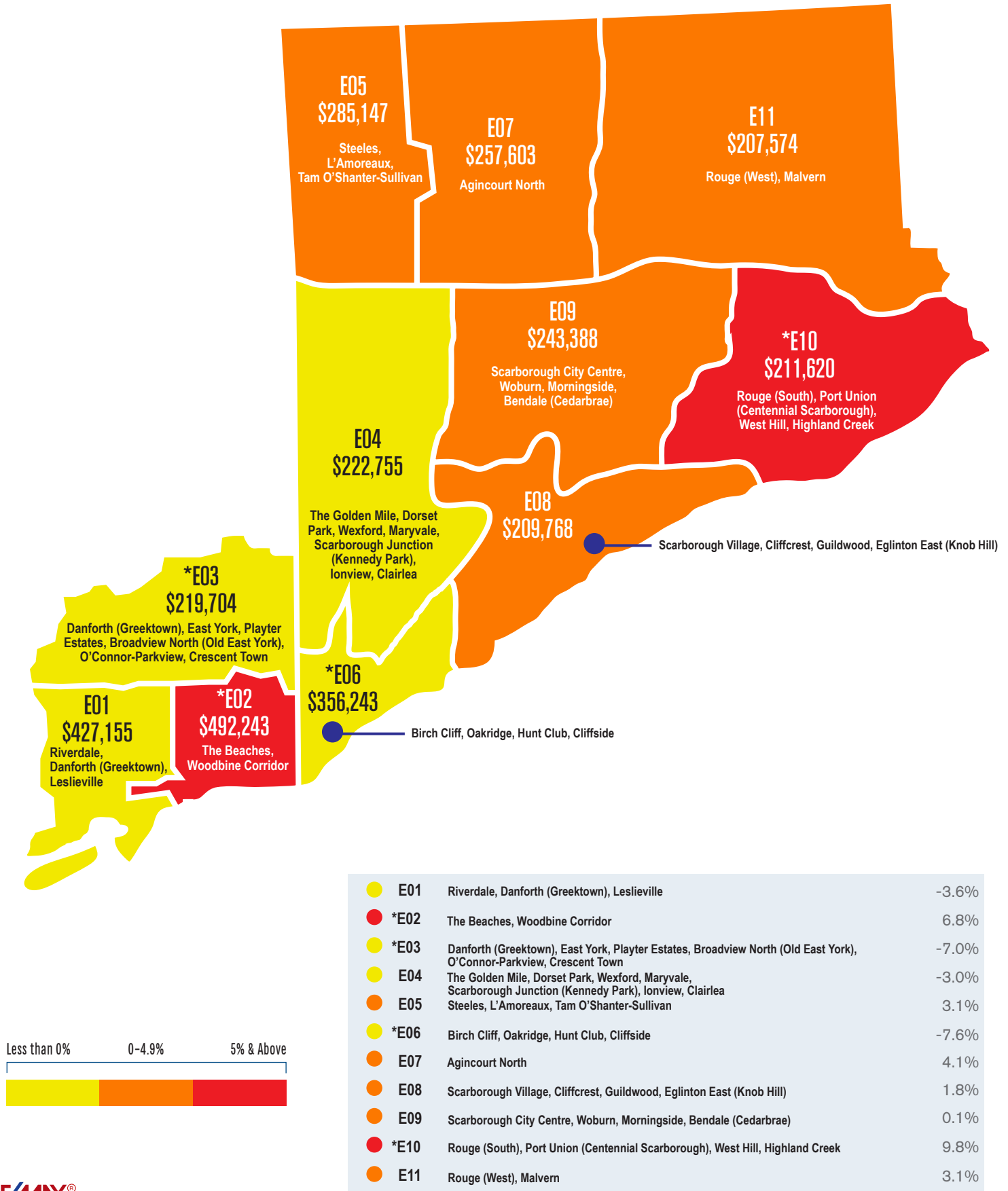
City of Toronto – EAST – Detached Homes

Average price by percentage increase/decrease: January to June 2013



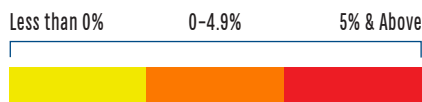
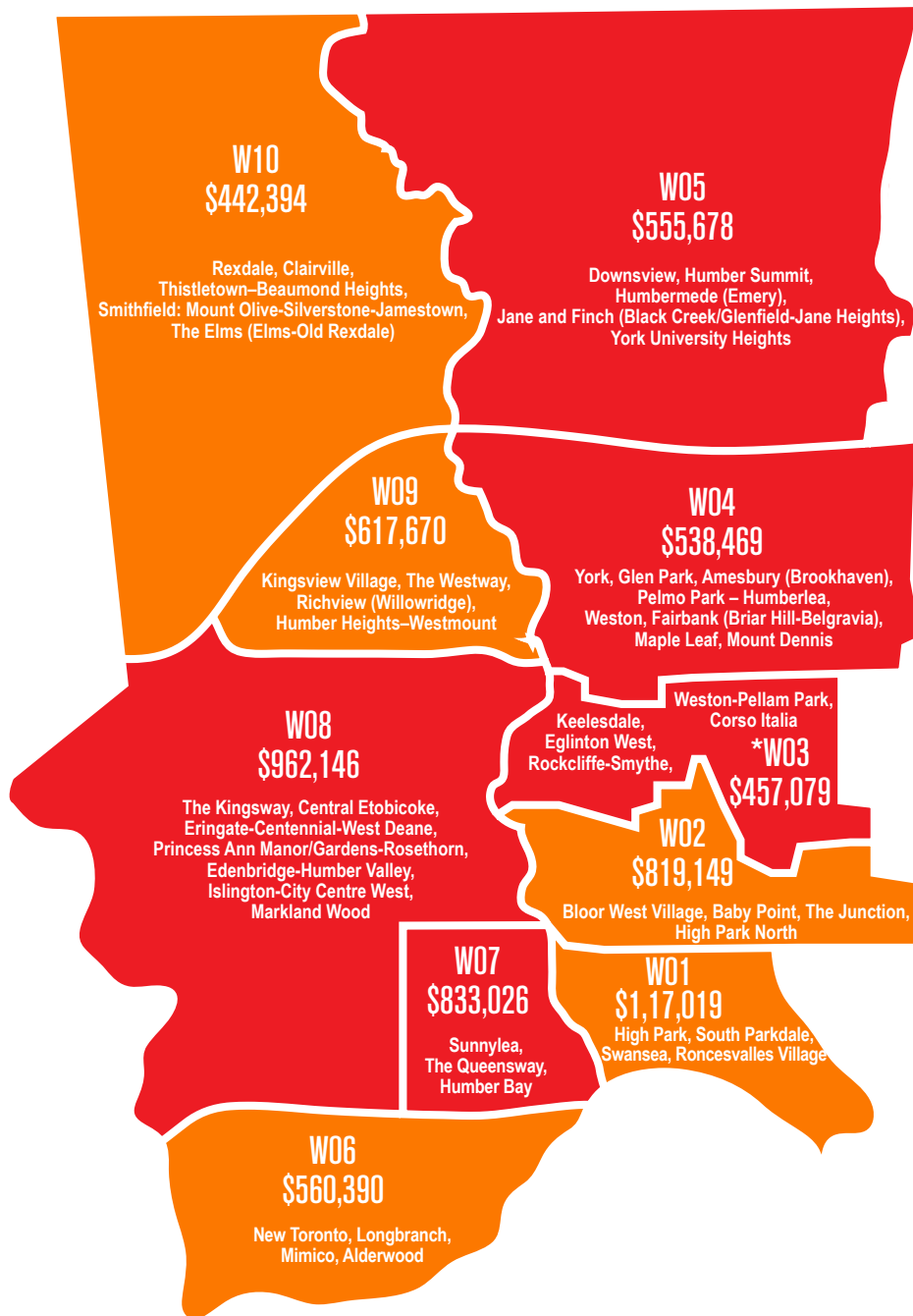
City of Toronto – EAST – Condominium Apartments & Towns

Average price by percentage increase/decrease: January to June 2013



City of Toronto – WEST – Detached Homes

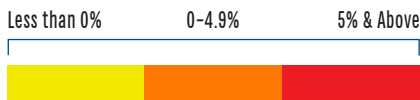
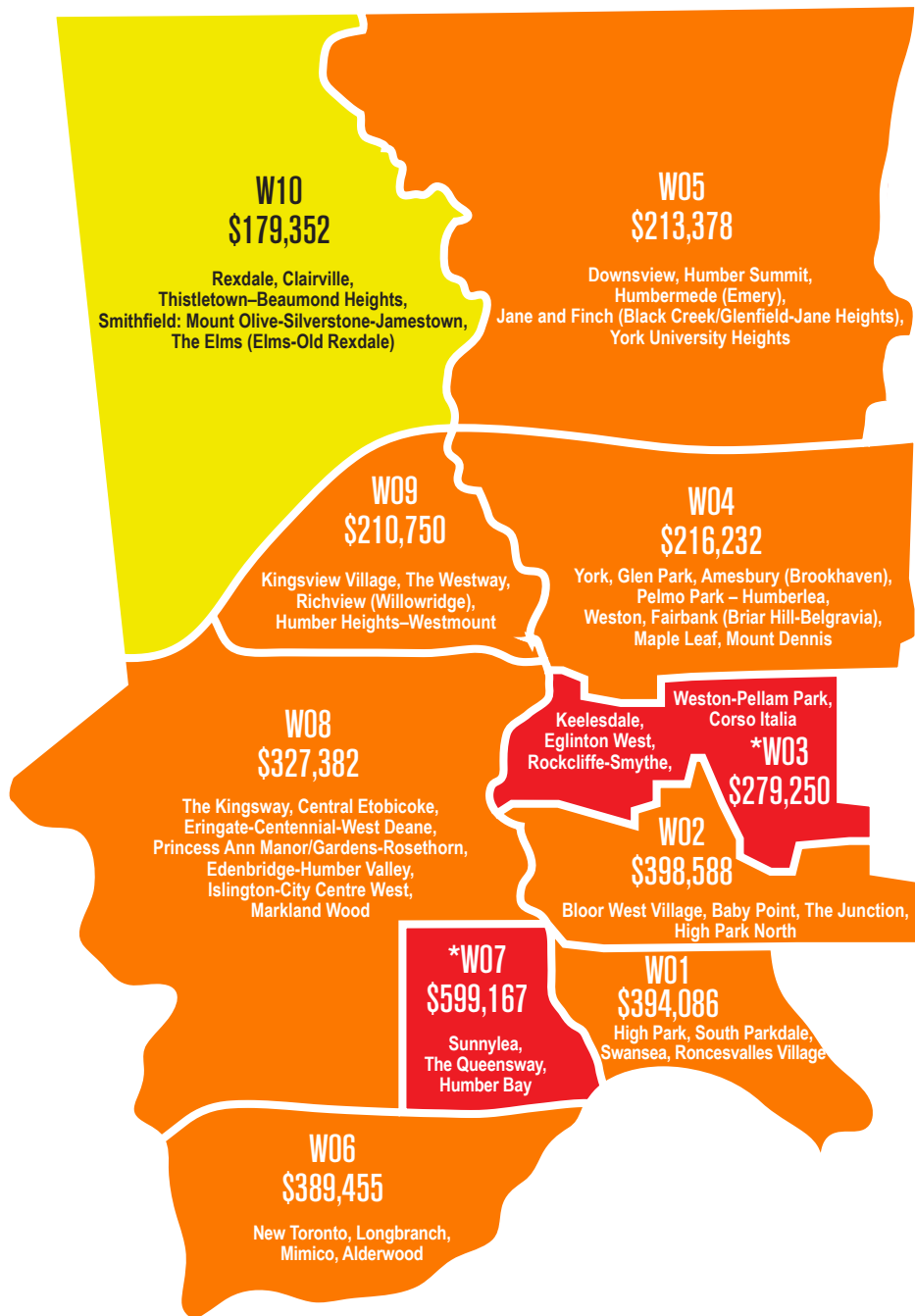
Average price by percentage increase/decrease: January



●	W01	High Park, South Parkdale, Swansea, Roncesvalles Village	4.8%
●	W02	Bloor West Village, Baby Point, The Junction, High Park North	1.9%
●	*W03	Keelesdale, Eglinton West, Rockcliffe-Smythe, Weston-Pellam Park, Corso Italia	10.2%
●	W04	York, Glen Park, Amesbury (Brookhaven), Pelmo Park – Humberlea, Weston, Fairbank (Briar Hill-Belgravia), Maple Leaf, Mount Dennis	9.2%
●	W05	Downsview, Humber Summit, Humbermede (Emery), Jane and Finch (Black Creek/Glenfield-Jane Heights), York University Heights	8.6%
●	W06	New Toronto, Longbranch, Mimico, Alderwood	1.4%
●	W07	Sunnylea, The Queensway, Humber Bay	9.4%
●	W08	The Kingsway, Central Etobicoke, Eringate-Centennial-West Deane, Princess Ann Manor/Gardens-Rosethorn, Edenbridge-Humber Valley, Islington-City Centre West, Markland Wood	6.2%
●	W09	Kingsview Village, The Westway, Richview (Willowridge), Humber Heights–Westmount	2.2%
●	W10	Rexdale, Clairville, Thistletown–Beaumont Heights, Smithfield: Mount Olive-Silverstone-Jamestown, The Elms (Elms-Old Rexdale)	3.9%

City of Toronto – WEST – Condominium Apartments & Towns

Average price by percentage increase/decrease: January to June 2013



● W01	High Park, South Parkdale, Swansea, Roncesvalles Village	1.4%
● W02	Bloor West Village, Baby Point, The Junction, High Park North	1.0%
● *W03	Keelesdale, Eglinton West, Rockcliffe-Smythe, Weston-Pellam Park, Corso Italia	9.0%
● W04	York, Glen Park, Amesbury (Brookhaven), Pelmo Park – Humberlea, Weston, Fairbank (Briar Hill-Belgravia), Maple Leaf, Mount Dennis	0.7%
● W05	Downsview, Humber Summit, Humbermede (Emery), Jane and Finch (Black Creek/Glenfield-Jane Heights), York University Heights	2.0%
● W06	New Toronto, Longbranch, Mimico, Alderwood	2.0%
● *W07	Sunnylea, The Queensway, Humber Bay	32.9%
● W08	The Kingsway, Central Etobicoke, Eringate-Centennial-West Deane, Princess Ann Manor/Gardens-Rosethorn, Edenbridge-Humber Valley, Islington-City Centre West, Markland Wood	1.7%
● W09	Kingsview Village, The Westway, Richview (Willowridge), Humber Heights–Westmount	3.9%
● W10	Rexdale, Clairville, Thistletown–Beaumont Heights, Smithfield: Mount Olive-Silverstone-Jamestown, The Elms (Elms-Old Rexdale)	-0.8%